

Ex vivo evaluation of a relation
between wrinkling direction
and collagen orientation in
photoaged rat skin

in collaboration with Osaka Univ.

Optical probe of cutaneous photoaging

Conventional study

Combined SHG and two-photon autofluorescence microscope has been applied as an indicator of changes in dermal collagen and elastin content.

ref) Lin, OL **30**, 2275 (2005)

Koehler, OL **31**, 2879 (2006)

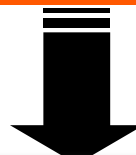
Change viewpoint!



Deep wrinkles characteristic of photoaged skin

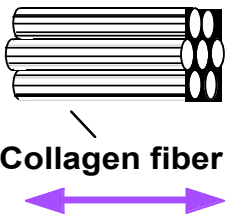
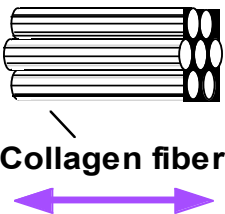
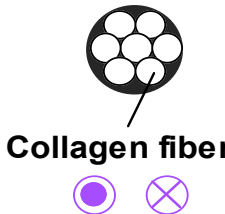


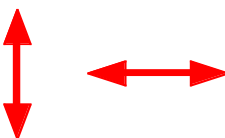


Wrinkle formation is closely related to directional property of collagen fiber and repeated mechanical stretch to the skin.



Relation between collagen orientation and wrinkle direction using polarization-resolved SHG microscope

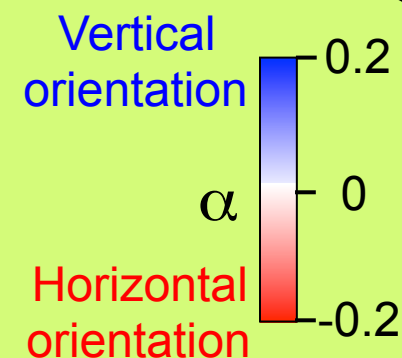
Collagen orientation vs. Laser polarization

	Axial (Non-centrosymmetric)		Cross-sectional (Centrosymmetric)
	Parallel	Perpendicular	
Collagen orientation			
Laser polarization			
SHG light	Strong	Weak	None

Collagen orientation parameter (α)

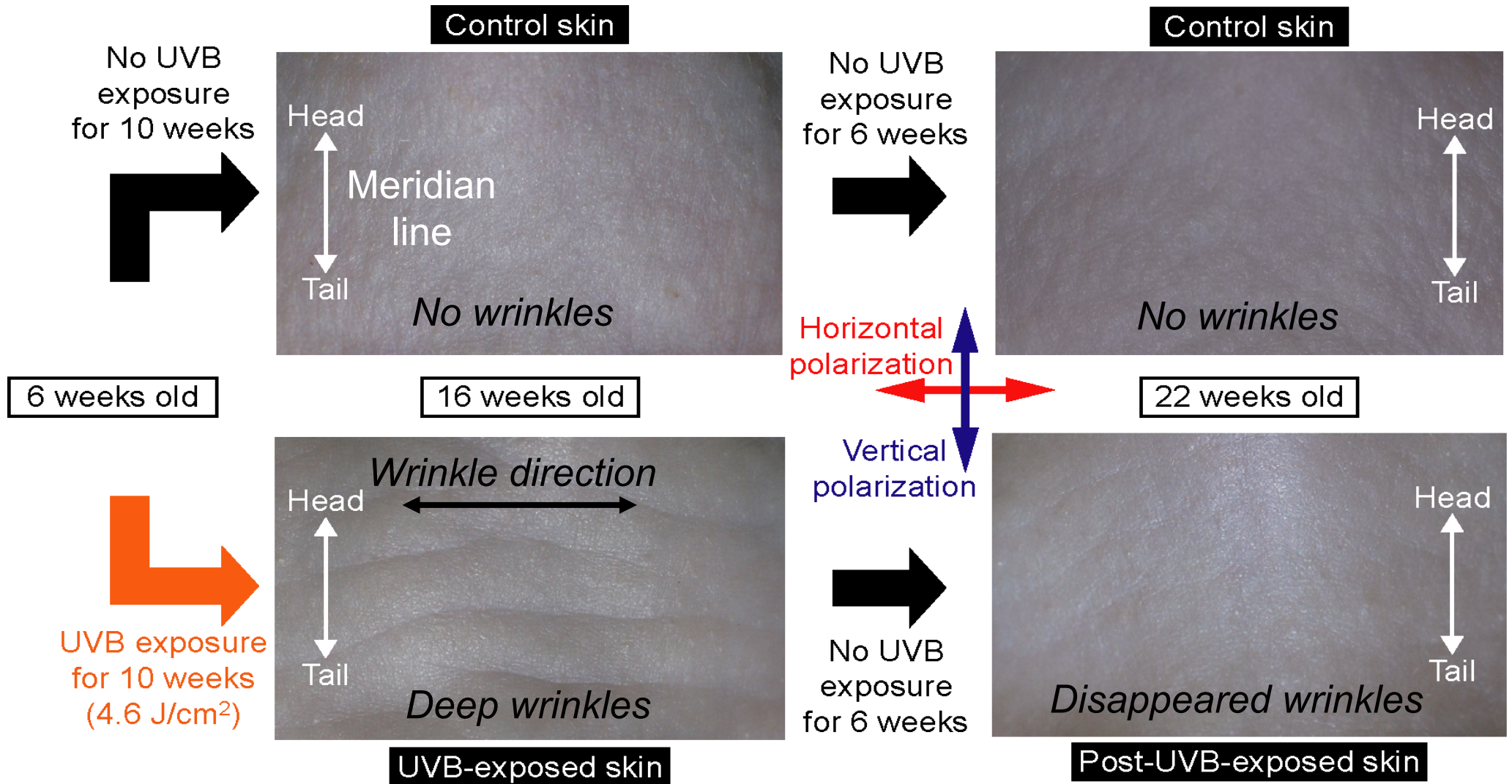
$$\alpha = \frac{I_V - I_H}{I_V + I_H}$$

I_V : SHG intensity with *vertical polarization*
 I_H : SHG intensity with *horizontal polarization*



Sample : back skin of hairless mice

(sample size = 30mm*30mm)

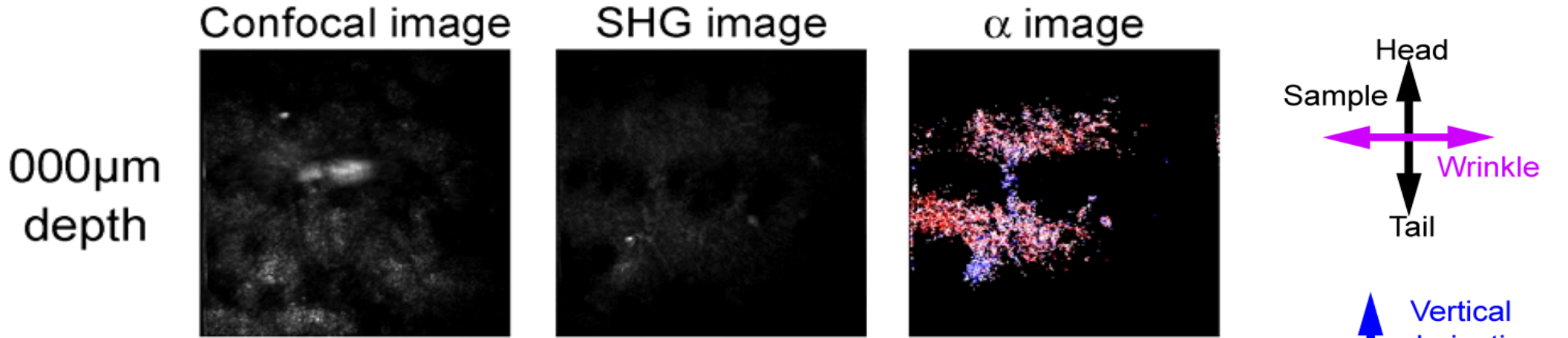


ref) Klingman, J. Am. Acad. Dermatol. 21, 623-631 (1989).

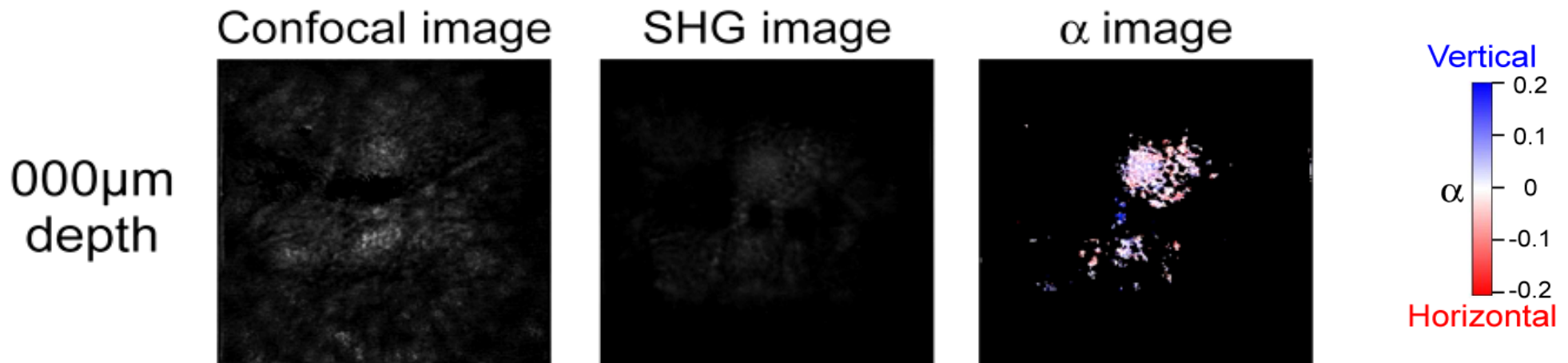
UVB-exposed vs. age-matched control

(image size = $800\mu\text{m} \times 800\mu\text{m}$)

UVB-exposed sample (16 weeks old)



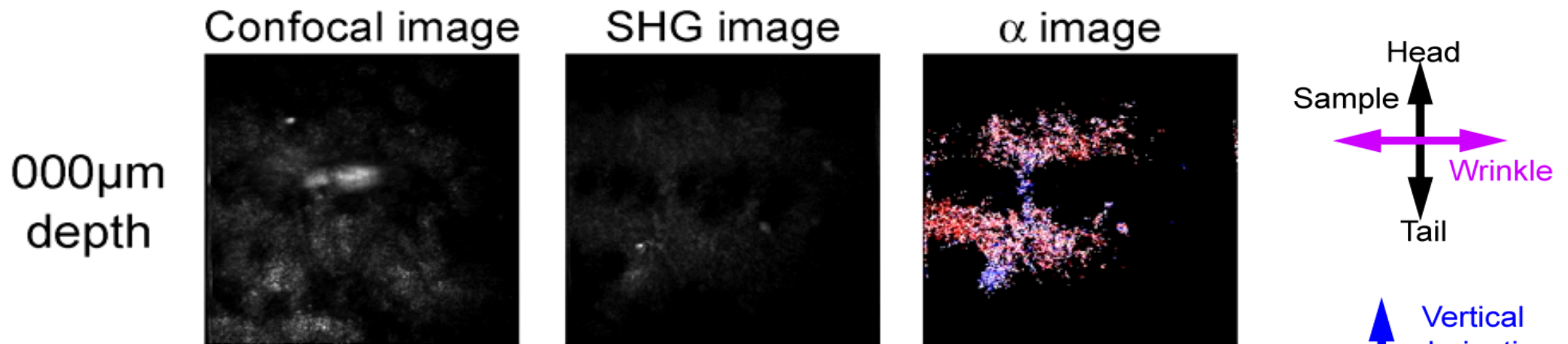
Age-matched control sample (16 weeks old)



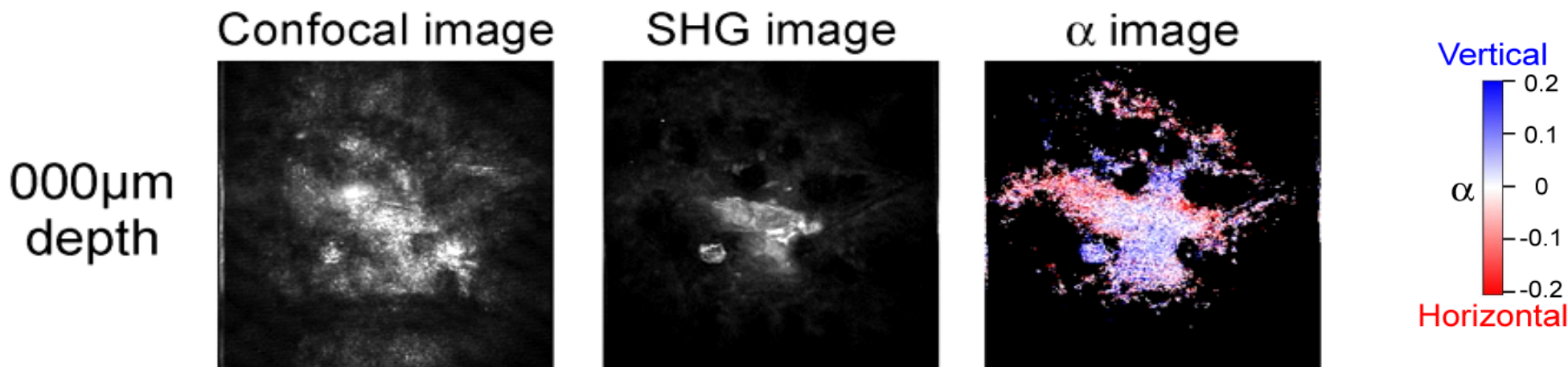
UVB-exposed vs. Post-UVB-exposed

(image size = $800\mu\text{m} \times 800\mu\text{m}$)

UVB-exposed sample (16 weeks old)



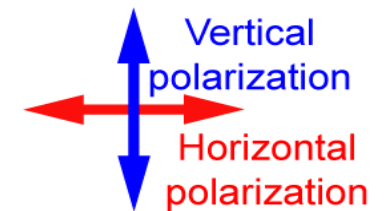
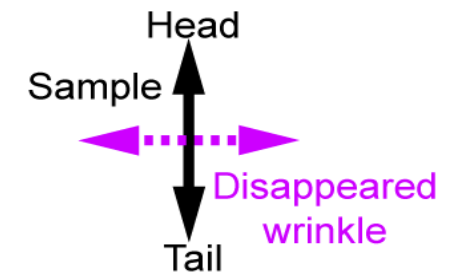
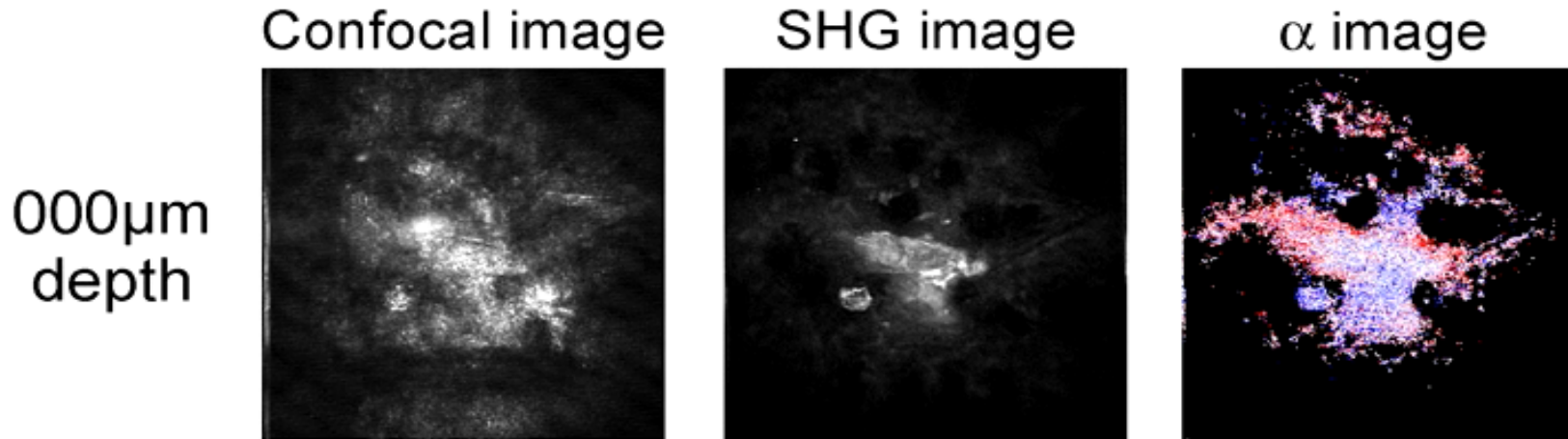
Post UVB-exposed sample (22 weeks old)



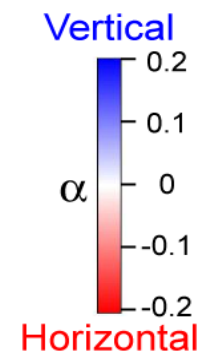
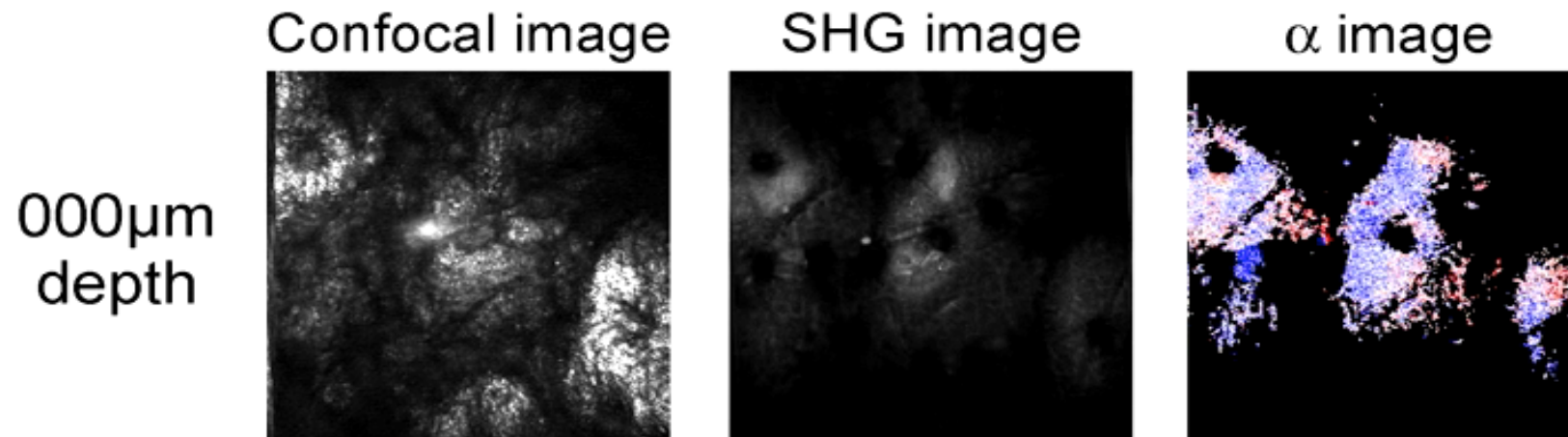
Post-UVB-exposed vs. age-matched control

(image size = $800\mu\text{m} \times 800\mu\text{m}$)

Post-UVB-exposed sample (22 weeks old)

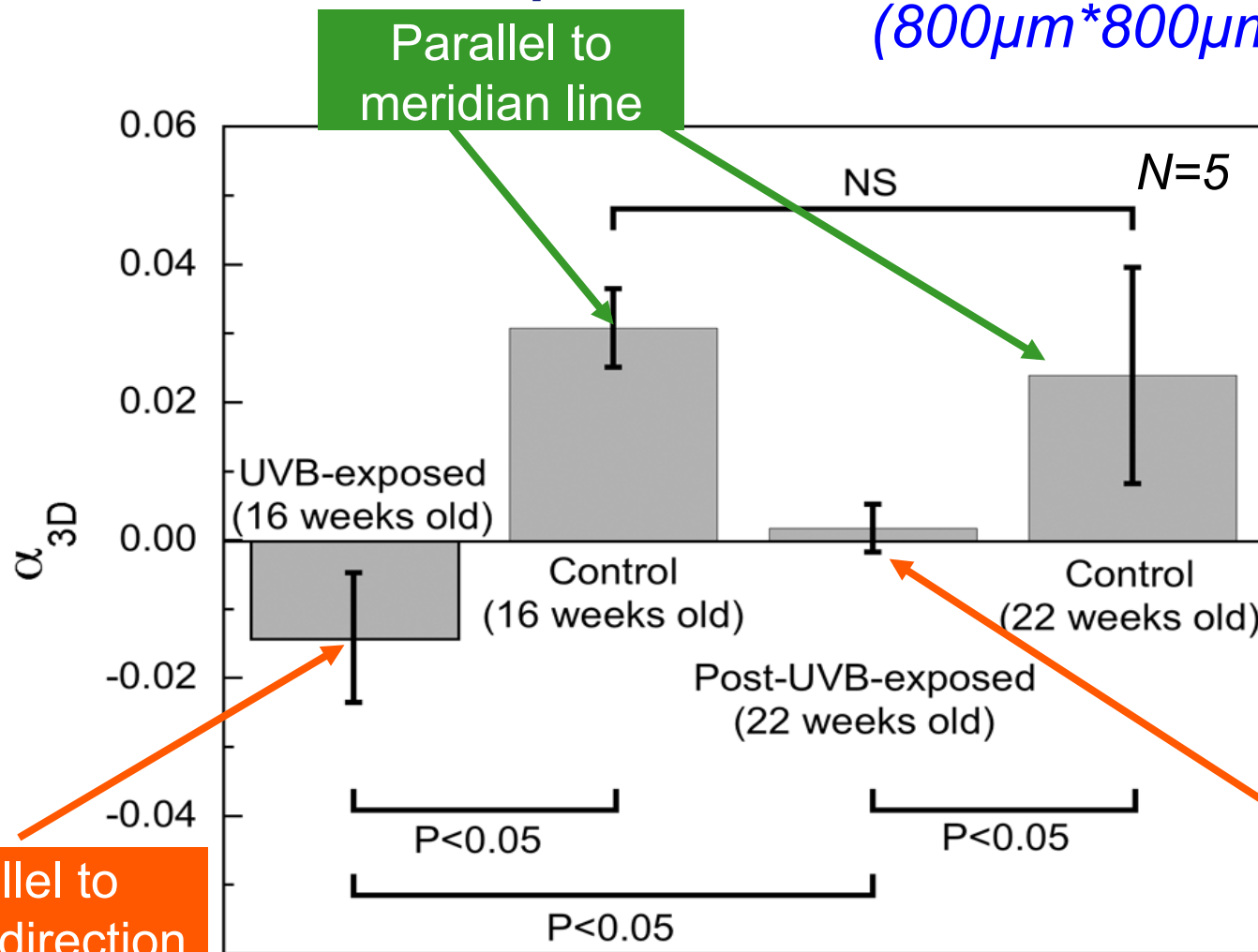


Age-matched control sample (22 weeks old)



Statistics of α parameters for 3D volume

($800\mu\text{m} \times 800\mu\text{m} \times 300\mu\text{m}$ -depth)



Middle between control and UVB-exposed skins

Parallel to wrinkle direction

UVB-induced wrinkles are closely related to the change of collagen orientation!